

## Instruction of Mobile Network Radio

### ■Safety Warning before use

Do not use the mobile radio in the explosive environments ( such as gas , dust , steam , etc . )

Please turn off the mobile radio : The machine can not be modified or adjusted for any reason.

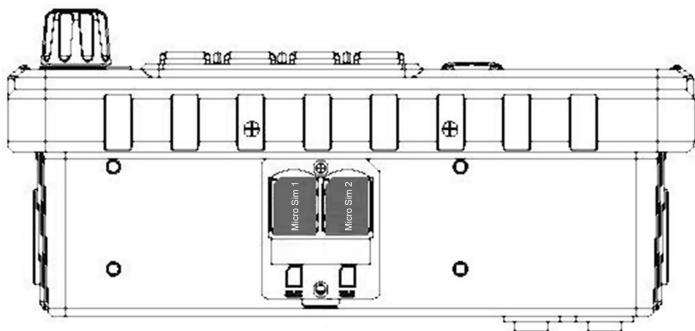
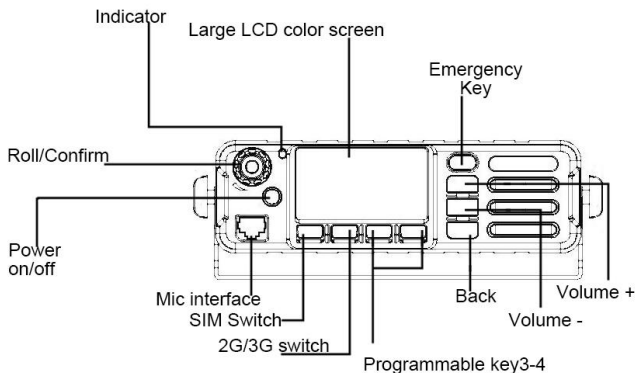
Please don't let the mobile radio stand in sunlight directly for a long time , or put it near by the heating appliances.


Do not place mobile radio in extremely dusty ,moisture and water splashing places , and do not put in uneven surface.

Maintenance can only be carried out by professional and technical personnel , Please do not disassemble by oneself.

Input DC 12-24V, please **Do not directly connect 220V/110V power supply**, may cause burn to the PCB

### ■Get familiar to your Radio



<b>Power</b>	*Long press to On/Off the Radio (only for without acc cable, W7 plus with acc function ) *short press for lock screen
 <b>SOS Key</b>	*for talking app, Short press SOS key to send SOS message to Dispatcher

## ■Get started

First of all, you have to prepare micro sim card with data flow function activated for your network mobile radio.

### 1.1 Connect power cable to your Radio

Red is positive, black is negative

### 1.2 Install GPS Antenna to the radio (GSM antenna built in)

Please Install Antenna to the radio before use or there maybe no GPS signal.

1.3 **Install SIM CARD:** bottom of the Radio is Sim card port (micro sim card size), insert the SIM card, and close the dust cover.

(How to choose SIM card? 850/1800/1900/2100MHz; micro sim card size, With economic data flow to save the cost; Choose the service provider stable signal)

1.4 **Connect WIFI: Settings-->Wi-fi:** connect your Wifi to offer data to the Radio.

1.5 **Move or delete Icon:** Long press the menu in the screen or widget icon, the corresponding icon can be moved or deleted

### 1.6 how to Download apps?

1.6.1. Download the app from "Play Store"

1.6.2 Search on "Browser" to download the app

1.6.3 Download from computer: Settings-->about phone-->Build number, click "Build number" 4 times: "you are now a developer!", back-->"developer options"-->USB debugging ✓, then connect USB cable with radio (Android type), go to home page in the Notifications shade, which pulls down from the top of the screen."connected as USB storage"--> ,choose it.

Now in computer Keep apk in file fold "my PC"-->phone storage--download

find this APK on the same path on your radio, tick it to install (you may have to set the right of install unknown source)

1.6.4 Download to micro TF card, then install from TF card to the radio

**\*\*\*Flash or Root right please refer to your agency as we highly require professional to operate.\*\*\***

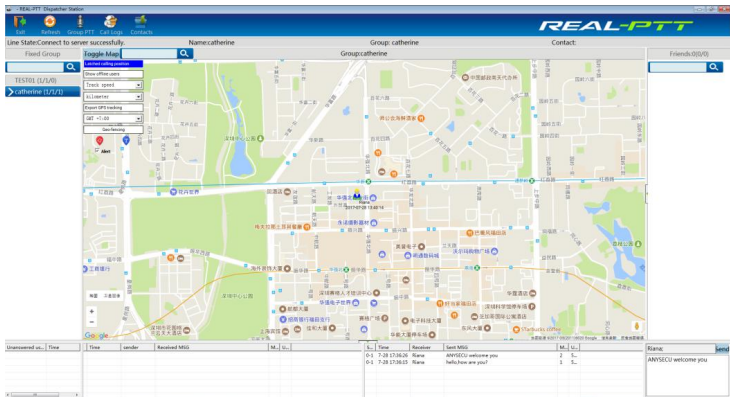
\*\*\*As the touch screen mobile radio same as smart phone for some basic use (such as make call, message, calendar, ) here will not explain much, for more ,please refer to our after-sell service, thanks.

2.1we will talk about the real-ptt apk (recently W7 W7plus radio support realptt, zello, which means those apk work with hand mic, for more apk, please send us the apk for test, thanks)

## Platform Introduce: About Real PTT

3.1 **Login Account on Mobile radio by type** (area depends on server area, your country or the nearest, account cost yearly fee, need buy from radio supplier or local agency to get)

3.2 **Login PC Platform (dispatcher)** to Manage your Radio and more function



Download Real-PTT and login in your account, On PC Press “Space key” to Talk, other function can use your mouse to control.



### 3.3 Login Smart phone to talk

Download RealPTT APP and Same operate as you login on the mobile Radio.

General Specification		
Model	W7	W7plus
Frequency band	2G: GSM850/1900 GSM900/1800 3G: WCDMA B2/B5 WCDMA B1/B8	GSM:850/900/1800/1900(B2/3/5/8) WCDMA:850/900/1900/2100(B1/2/5/8); TDD-LTE:2600/1900/2300/2600(B38/39/40/41); FDD-LTE:BAND 1/2/3/4/5/7/8/17/20
CPU	MT6570 1.3 Ghz	MT6737 1.5Ghz
RAM	512MB	1GB
Storage	4GB	8GB
OS	Android 6.0	Android 7.0
Screen Size	2.45 ISP 240*432 pixel	
Language	All main Languages	
Antenna	1)WCDMA/GSM antenna is built-in FPC antenna 2)GPS antenna with external antenna 3) BT/WIFI antenna is built-in FPC antenna	

<b>Wifi</b>	IEEE 802.11 b/g/n , 2.4G;
<b>Bluetooth</b>	Bluetooth 3.0HS Support V4.0,V3.0,V2.1
<b>GPS</b>	GPS Positioning, Support A-GPS function,1.57542GHz;
<b>USB</b>	USB 2.0
<b>SIM Type</b>	2 Micro Sim
<b>Dimension</b>	124*56*26mm
<b>Weight</b>	195g
<b>Working Voltage</b>	DC 12-24V
<b>Working Temperature</b>	-30°C to +75°C
<b>Platform Tested</b>	RealPTT, Zello, for more please test
<b>Talk Range</b>	Limitless in WCDMA/GSM Coverage
<b>RF Parameter</b>	
<b>Maximum Output Power</b>	Power class 3 (+24dBm +2.5/-1.5dBm) GSM/GPRS 850MHz/900MHz:
	Power class 4 (+33dBm +2.5/-0.5dBm) GSM/GPRS 1800MHz/1900MHz:
	Power class 1 (+30dBm +2.5/-0.5dBm)
<b>Receiving Sensitivity</b>	WCDMA 2100: $\leq$ 108dBm
	WCDMA1900: $\leq$ 109dBm
	WCDMA900: $\leq$ 109dBm
	WCDMA850: $\leq$ 109dBm
	GSM850/900/1800/1900: $\leq$ 107dBm
<b>GPS</b>	
<b>Sensitivity</b>	Catch -144dBm, Track -159dBm
<b>Technical Sensitivity</b>	
<b>Data Speed Rate</b>	GSM CS: UL 9.6kpbs/ DL 9.6kpbs GPRS: Multi-slot Class 10
	EDGE: Multi-slot Class 12
	WCDMA CS: UL 64kpbs/ DL 64kpbs WCDMA PS: UL 384kpbs/ DL 394kpbs
<b>Protocol</b>	HSDPA/WCDMA/EDGE/GPRS/GSM
<b>Maximum RF power</b>	$\leq$ 20dBm
<b>Receiving Sensitivity</b>	IEEE 802.11 g: $\leq$ 65dBm;
<b>Maximum RF power</b>	Class 1 $\leq$ 10dBm;
<b>Receiving Sensitivity</b>	GFSK: $\leq$ 95dBm,DQPSK: $\leq$ 94dBm , DPSK: $\leq$ 88dBm;

we endeavors to achieve the accuracy and completeness of this manual, but it is still not perfect for any possible omissions or printing errors. All the above functions and design are subject to be updated without prior notice due to continuous development.