

1.1 Get familiar to your Radio

Briefly Introduce



■Get started

First of all, you have to prepare a sim card (standard size) with data flow function activated for your network radio, HD-700 support dual Sim card, if you use two cards better they are from different provider so that switch if weak signal area.

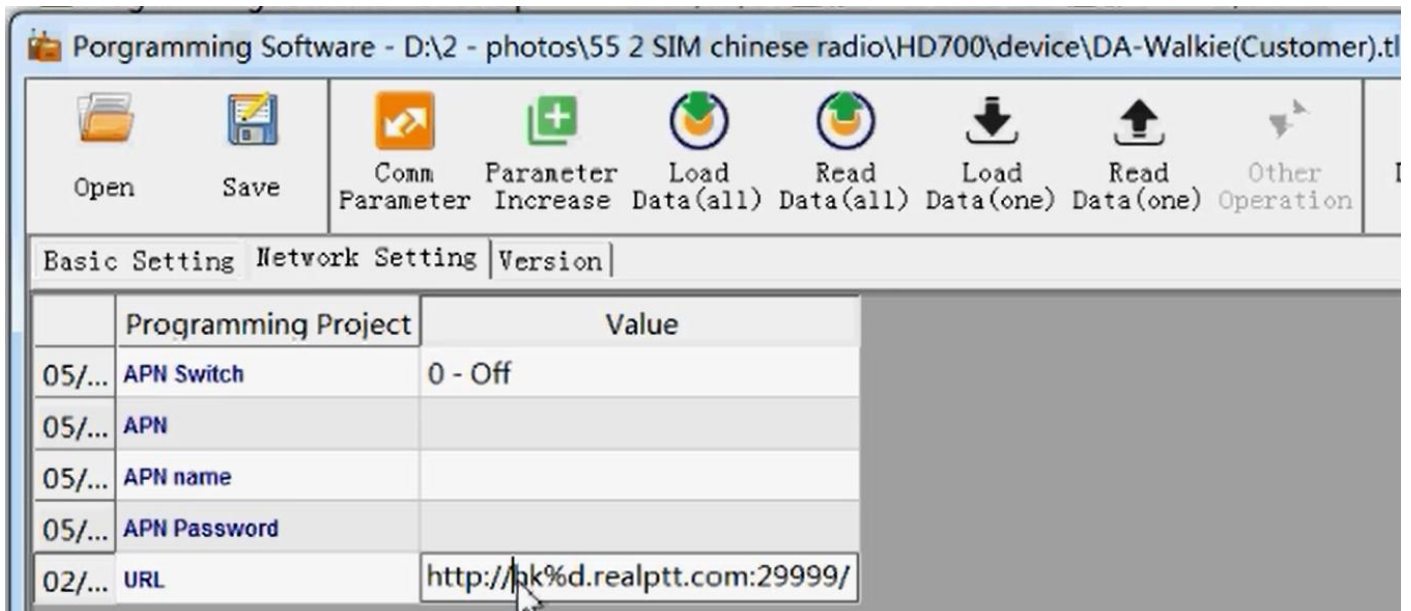
1.1 **Install SIM CARD:** Take off the battery, insert the SIM card, and cover the battery



1.2 Program your RealPTT ID (cost yearly fee / account) account to the radio

- ◆ Please Install USB driver depends on your PC system (such as WIN7 64bit)
- ◆ Connect radio with PC by USB cable
- ◆ power on your radio with **hold on press PTT**, then radio enter to programming mode
- ◆ fulfill your RealPTT ID (please order from Anysecu) into the software, (for example account:any001; password:123456)

Programming Project	Value
01/... User Password	1234
02/... Account	any001
02/... Password	123456
03/... Language	1 - English
03/... SOS selection	2 - TTS + Distance
03/... SOS information	SOS
03/... SOS Broadcast times	3
04/... Calling Time(0-999sec)	60



*APN information if need depends on the SIM card server please call your sim card provider to get it, thanks

*RealPTT ID and password and URL please refer to your RealPTT ID supplier or Radio supplier.

After set done, press “Load Data (all)” to write the data to your Radio, power off and unplug USB-K1 data cable

Now you can Restart your radio,enjoy the talk.

■Main features

◆Talk Distance limitless if network coverage

GT200 is an GSM/WCDMA radio which use data flow for communicate, with data covered area, users can talk freely,national talk without distance limit.

◆Unlimited Groups/Friends/Members

GT200 adopt realptt platform, Dealer management platform can create numerous groups, users, add users to same group to talk and set their right, level.

(p.s.: users id cost yearly fee)

◆Single Call/Group Call/All Call

Users can choose another users to talk or call their group , or call some of the users from recently group (User rights need to be set in the dealer management platform).

◆Adopt Realptt platform, free PC dispatcher

GT200 use REALPTT platform, users can login PC dispatcher to make call, monitor users, remote kill/stun,active, send message.

◆Radio/Smart phone/ PC linked system

Users can download RealPTT apk to mobile phone and login in computer and write account to radio to make call or monitor.

(1 Realptt ID can login in only 1 terminal at the same time)

◆GPS Location/ trajectory

In the shutdown state, press SK1 and then tum on the radio with GPS function the indicator light is quickly flashing in red when searching the GPS position. The indicator light is green when GPS position searched successfully. The indicator light is red when GPS position searching failure.

Built in GPS function, on mobile phone or computer can watching users Real time GPS positioning and trajectory playback.

◆Call Records

The content of the call and message is kept in the server, and it is deleted regularly.

◆Dispatch Monitor/Call/SMS

Users can login PC dispatcher to make call, monitor users, remote kill/stun,active, send message.

◆Key Beep on/off

“landing””please insert SIM card” “du~ du~”prompt on/off can set by PC depends on users prefer

◆Time-out-Timer

Timeout prohibition can set by PC program,preventing channel from being occupied

◆PC programmable

Users have to program ID in to radio to start use

◆Program password protect

Users can set password for program

HD700

Specification

Frequency	EGSM900MHz DCS1800MHz
	CDMA2000/EVDO BC0
	WCDMA BAND1 /8
	TD-SCDMA 1.9G TD-SCDMA 2G
	LTE-FDD B1/B3 /B8 /B38/B39/B40/B41
Battery capability	2000mAh
Voltage	DC7.4~8.4V
Dimension	127x60x38mm
Weight	270g

Power Output

LTE Power Output	3 (0.25W)
GSM/GPRS Power Output	EGSM900: 4 (2W)
	DCS1800: 1 (1W)
EDGE Power Output	DGSM900: E2 (0.5W)
	DCS1800: E1 (0.4W)
CDMA 1X Power Output	3 (0.25W)
UMTS Power Output	WCDMA: 3 (0.25W)
	EVDO: 3 (0.25W)
	TD-SCDMA: 2 (0.25W)

Receiving sensivity

Frequency	Sensitivity (Typical)	Sensitivity (Maximum)
EGSM900	<-109dBm	3GPP
DCS1800	<-109dBm	3GPP
WCDMA 2100	<-110dBm	3GPP
WCDMA 900	<-109dBm	3GPP
TDSCDMA 1900	<-109dBm	3GPP
TDSCDMA 2000	<-109dBm	3GPP
CDMA BC0	<-109dBm	3GPP
LTE FDD/TDD	As follow	3GPP

Reference sensitivity								
E-UTRA	3GPP Standard				Test Value	3GPP standard		Duplex mode
Band	1.4MHz	3MHz	5MHz	10MHz	10MHz	15MHz	20MHz	
1	-	-	-100	-97	-101	-95.2	-94	FDD
3	-101.7	-98.7	-97	-94	-99	-92.2	-91	FDD
8	-102.2	-99.2	-97	-94	-102			FDD
38	-	-	-100	-97	-101	-95.2	-94	TDD
39	-	-	-100	-97	-101.5	-95.2	-94	TDD
40	-	-	-100	-97	-101	-95.2	-94	TDD
41	-	-	-99	-96	-101	-94.2	-93	TDD
GNSS Specification								
Tracking sensitivity				-159 dBm (GPS) / -158dBm (GLONASS) / TBD (BD)				
Cold Start Sensitivity				-148 dBm				
Location accuracy (open space)				2.5m (CEP50)				
TTFF (Open Land)				Hot Start < 1s Cold Start < 35s				
Types of acceptance				16-channel, C/A Code				
GPS L1 band				1575.42±1.023MHz				
GLONASS Band				1597.5~1605.8MHz				
BeiDou Band				1559.05~1563.14MHz				
updated frequency				Default 1 Hz				
GNSS Data Format				NMEA-0183				
GNSS consumption				100mA (GSM/CDMA 1X/UMTS/LTE dormancy, VBAT Pin)				
GNSS antenna				actived				

◆ Troubleshooting

No.	Problem	Causes and Solutions
1	Hint of Insert Sim card properly	SIM card not insert SIM card data not on SIM card slot have dust or break
2	Network failed	check the account write correctly; 2.Please check URL correctly; 3.Please check if APN are required; 4.Please check antenna installed correctly 5.Please check SIM Card data is on 6.Please make sure account is valid; 7.Server problem refer to real-ptt provider
3	No idea of how to programming	Please refer to the Anysecu Video guide on Youtube, thanks